

Via dei Colli, 66 - 31058 SUSEGANA (TV) - ITALY - Tel. +39.0438.6615 - Fax +39.0438.60657 - www.cmaspa.com - cma@cmaspa.com

ESPRESSO COFFEE MACHINE

USE AND MAINTENANCE MANUAL Instructions for the technician

MACHINE DIAGRAMS

ENGLISH

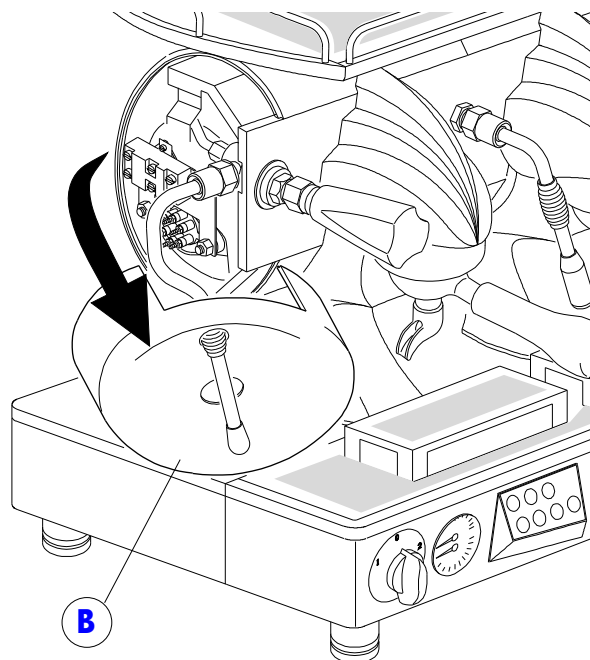
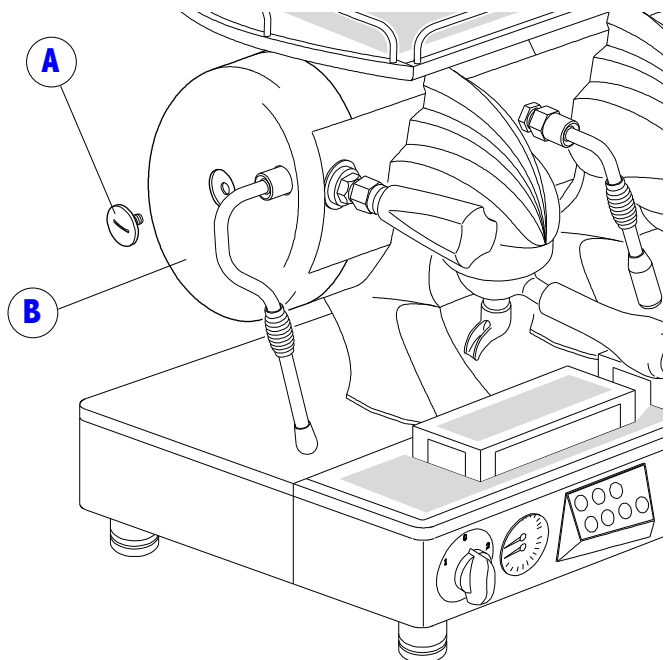
Summary

- 1 SIBILLA machine 4
 - 1.1 REPLACEMENT of the HEATING ELEMENT or of the HEATING ELEMENT PROTECTION.....4
 - 1.2 REPLACEMENT of the HOT WATER SOLENOID VALVE4
 - 1.3 WORKING on the CONTROL UNIT, PRESSURE SWITCH, DOSING DEVICES, OR CUP HEATER THERMOSTAT5
 - 1.4 WORKING on the DELIVERY GROUP or ITS COMPONENTS6
 - 1.5 REPLACEMENT of the HEATING ELEMENT of the CUP HEATER8
 - 1.6 WORKING on the UPPER PART OF THE BOILER9

1 SIBILLA machine

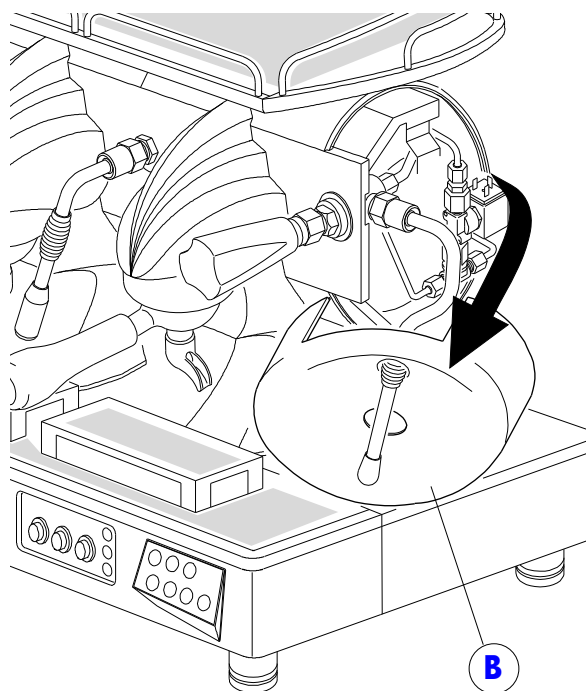
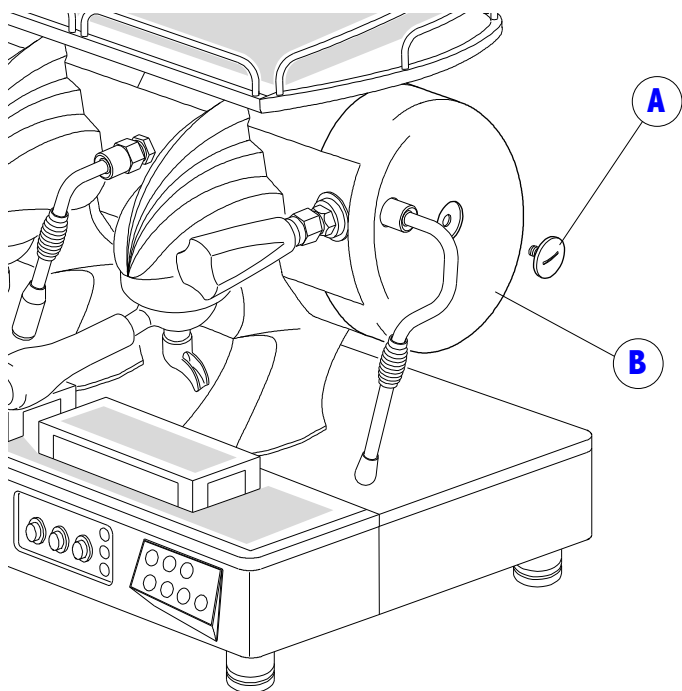
1.1 REPLACEMENT of the HEATING ELEMENT or of the HEATING ELEMENT PROTECTION

- 1) Completely loosen the screw (A) located on the left-hand side of the body (B)
- 2) Remove the left hand side of the body (B) following the profile of the steam nozzle
- 3) After working on the heating element or heating element protection, put the body panel (B) back in place and tighten the screw (A)



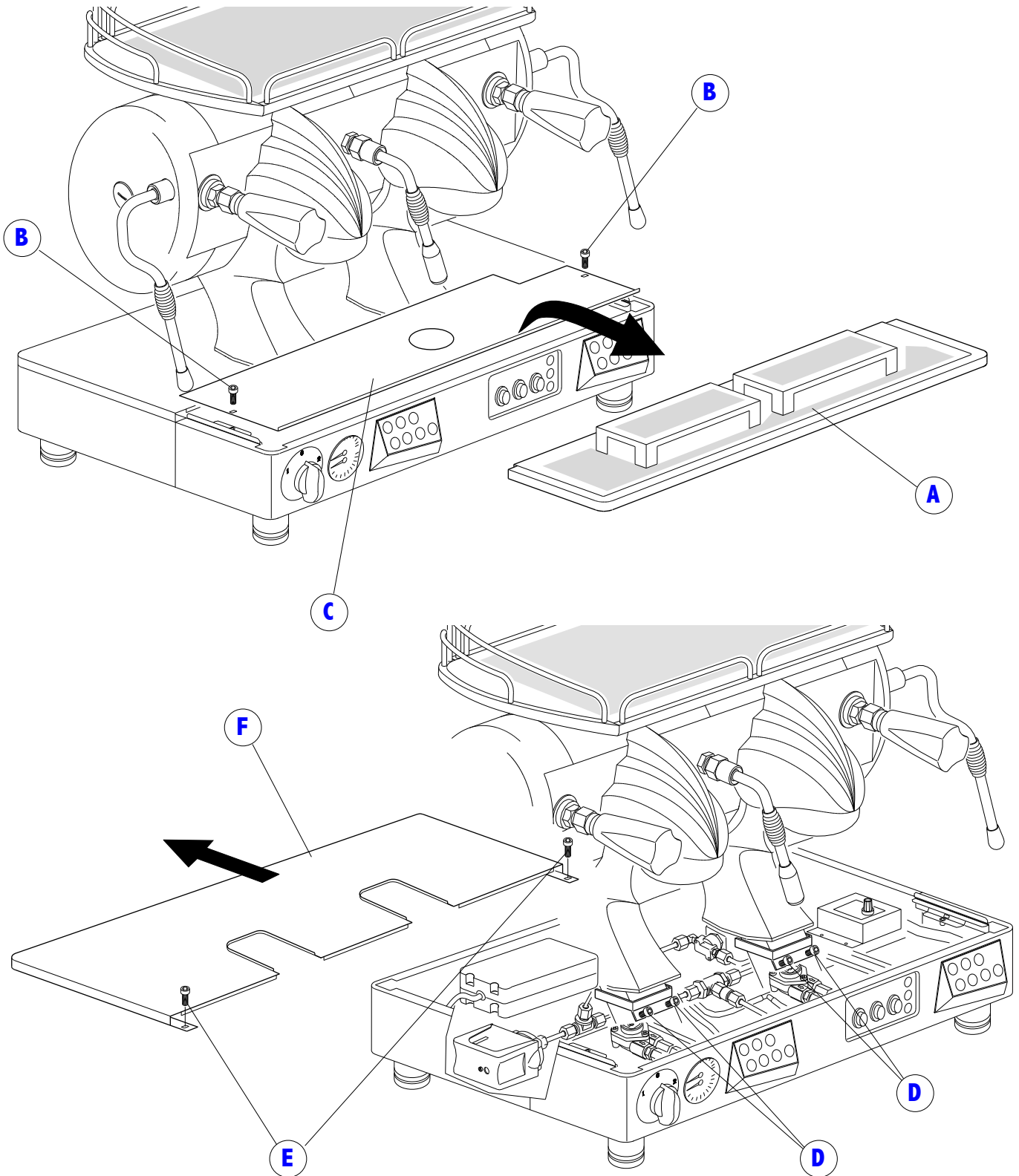
1.2 REPLACEMENT of the HOT WATER SOLENOID VALVE

- 1) Completely loosen the screw (A) located on the right-hand side of the body (B)
- 2) Remove the right-hand side of the body (B) following the profile of the steam nozzle
- 3) After working on the solenoid valve, put the body panel (B) back in place and tighten the screw (A)



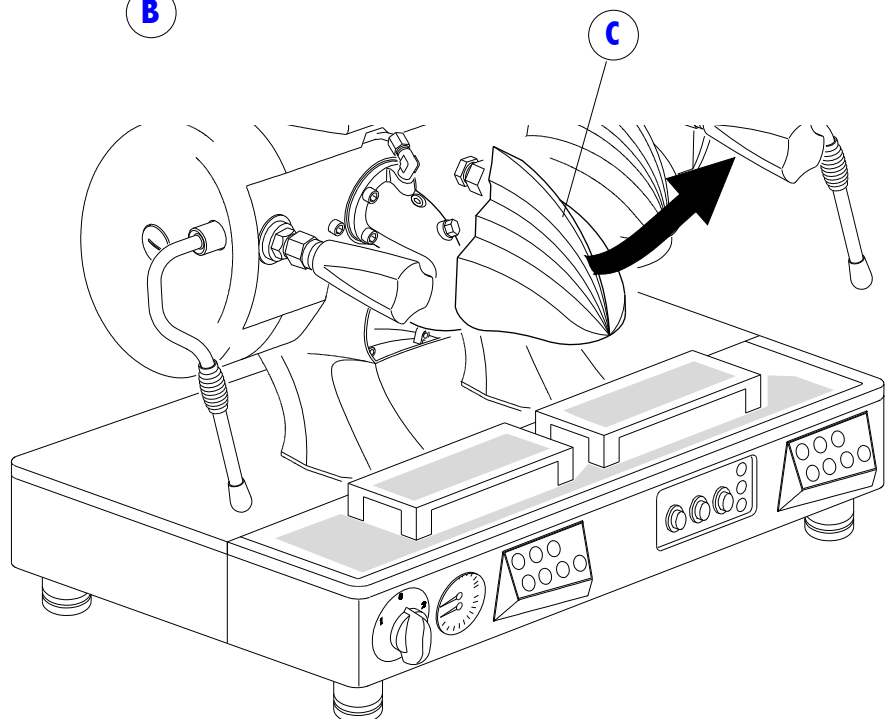
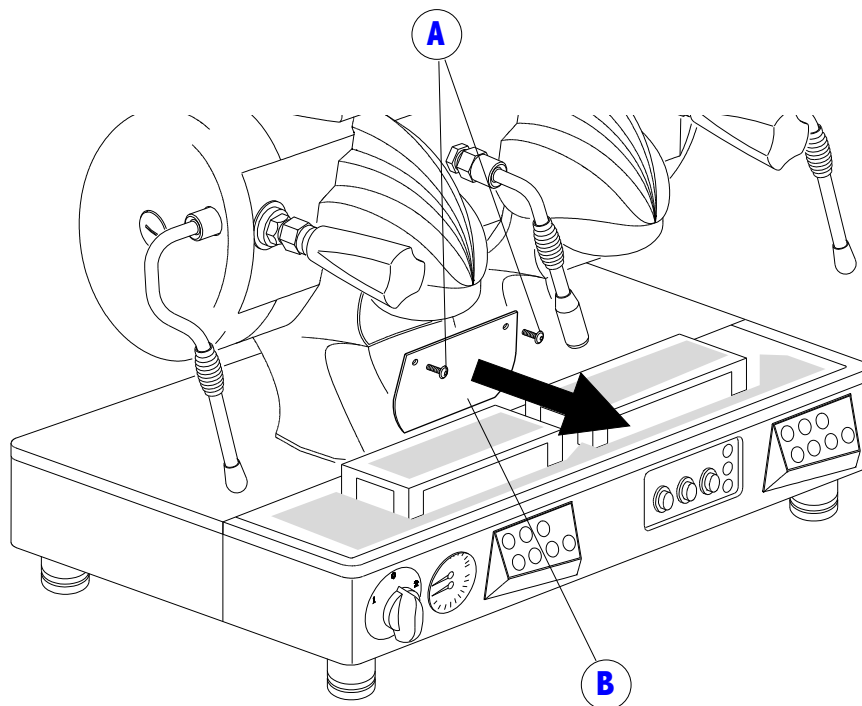
1.3 WORKING on the CONTROL UNIT, PRESSURE SWITCH, DOSING DEVICES, or CUP HEATER THERMOSTAT

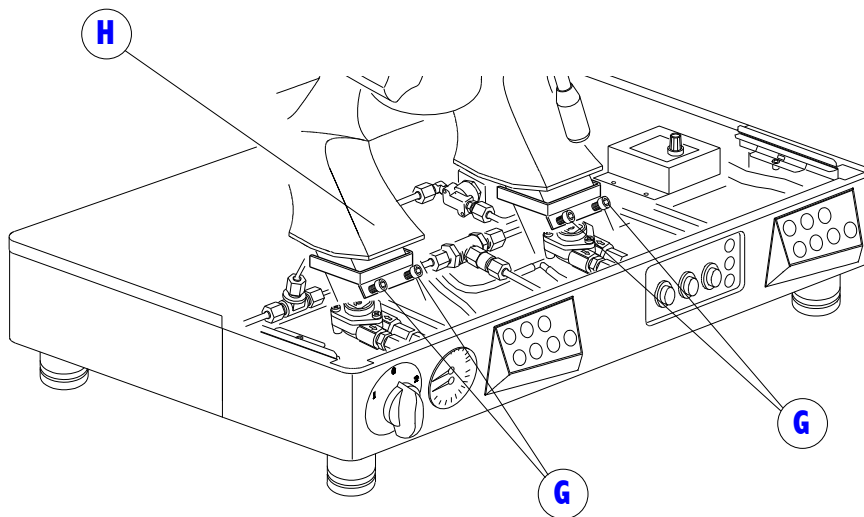
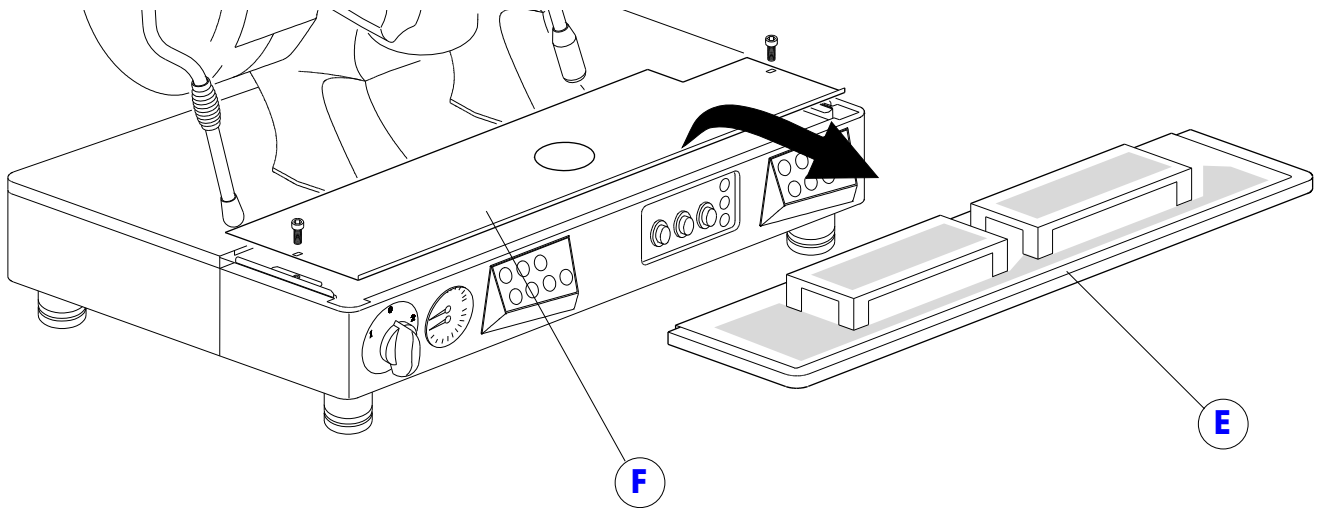
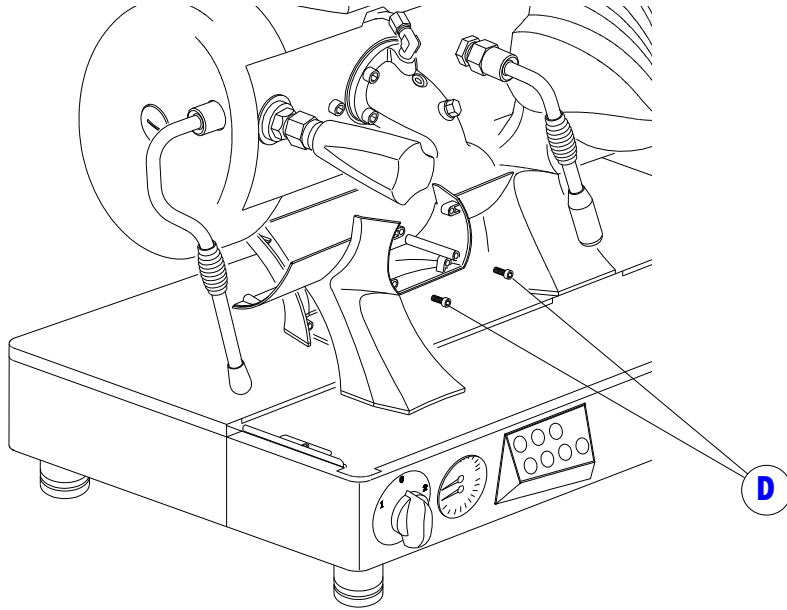
- 1) Remove the lower grilles and the drain tub (A)
- 2) Loosen the screws (B) and remove the protection (C)
- 3) Loosen the screws (D) located on the base of the support covers of the boiler
- 4) Loosen the screws (E) and remove the rear cover of the base (F) by sliding it outwards
- 5) After work is complete, put the body components back in place by following the procedure in reverse order



1.4 WORKING on the DELIVERY GROUP or ITS COMPONENTS

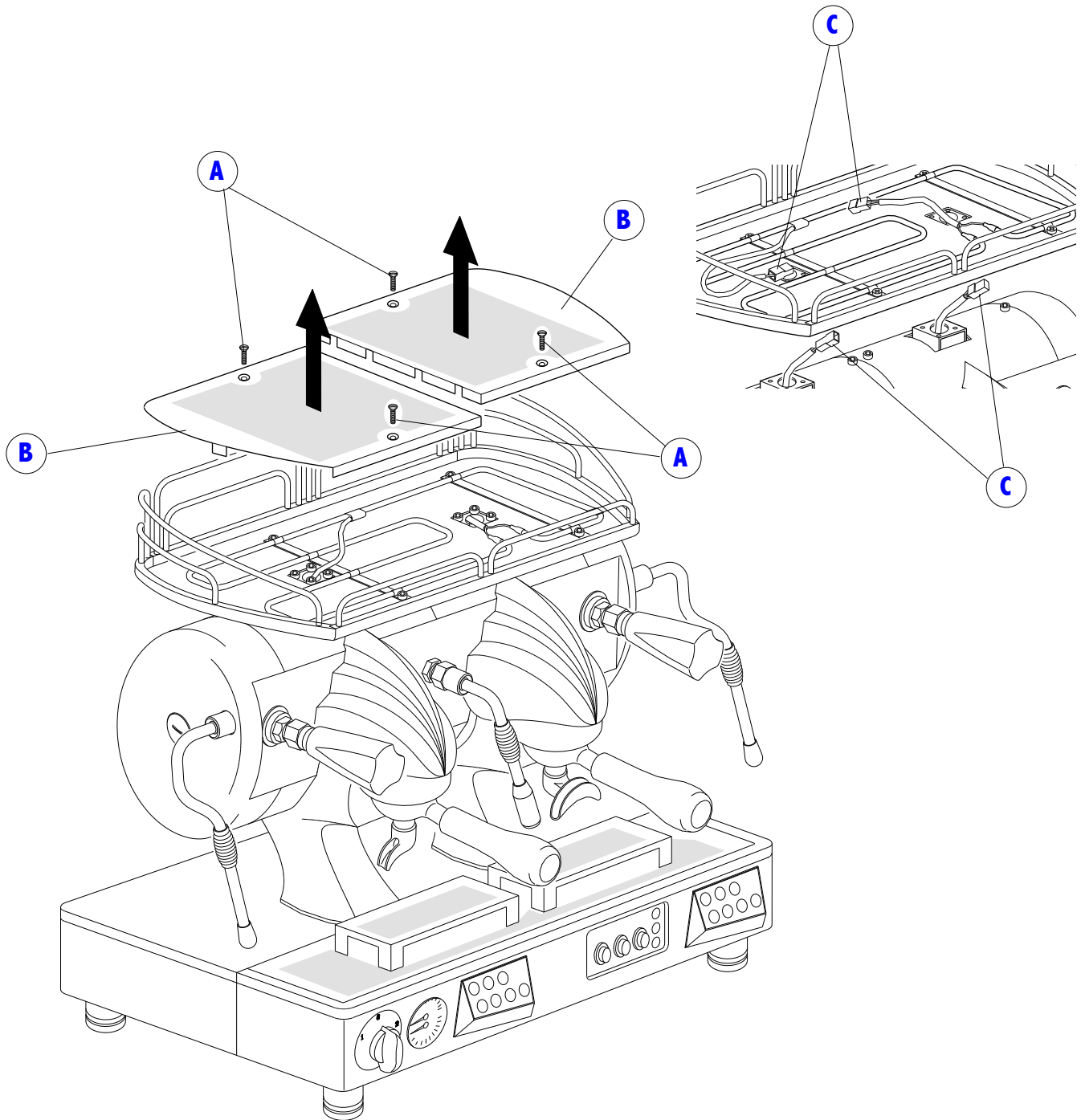
- 1) Use a 3 mm hex wrench to loosen the fastening screws (A) and remove the stainless steel plaque (B) located under the attachment ring of the delivery group
- 2) Remove the protection cap of the delivery group (C)
- 3) Loosen the screws (D) housed inside the holes
- 4) Remove the lower grilles and the drain tub (E)
- 5) Loosen the screws and remove the protection (F)
- 6) Loosen the screws (G) located on the base of the support covers of the boiler
- 7) Remove the front part of the support cover of the boiler by pulling it toward you (H)
- 8) After work is complete, put the body components back in place by following the procedure in reverse order





1.5 REPLACEMENT of the HEATING ELEMENT of the CUP HEATER

- 1) Loosen the fastening screws located on the cup holder grille (A)
- 2) Remove the cup holder grilles (B)
- 3) To remove the heating element it is first necessary to disconnect the electrical connectors (C) for the heating element and temperature probe which are located in the cup heater compartment
- 4) After working on the heating element, put the grilles (B) back in place and tighten the screws (A)

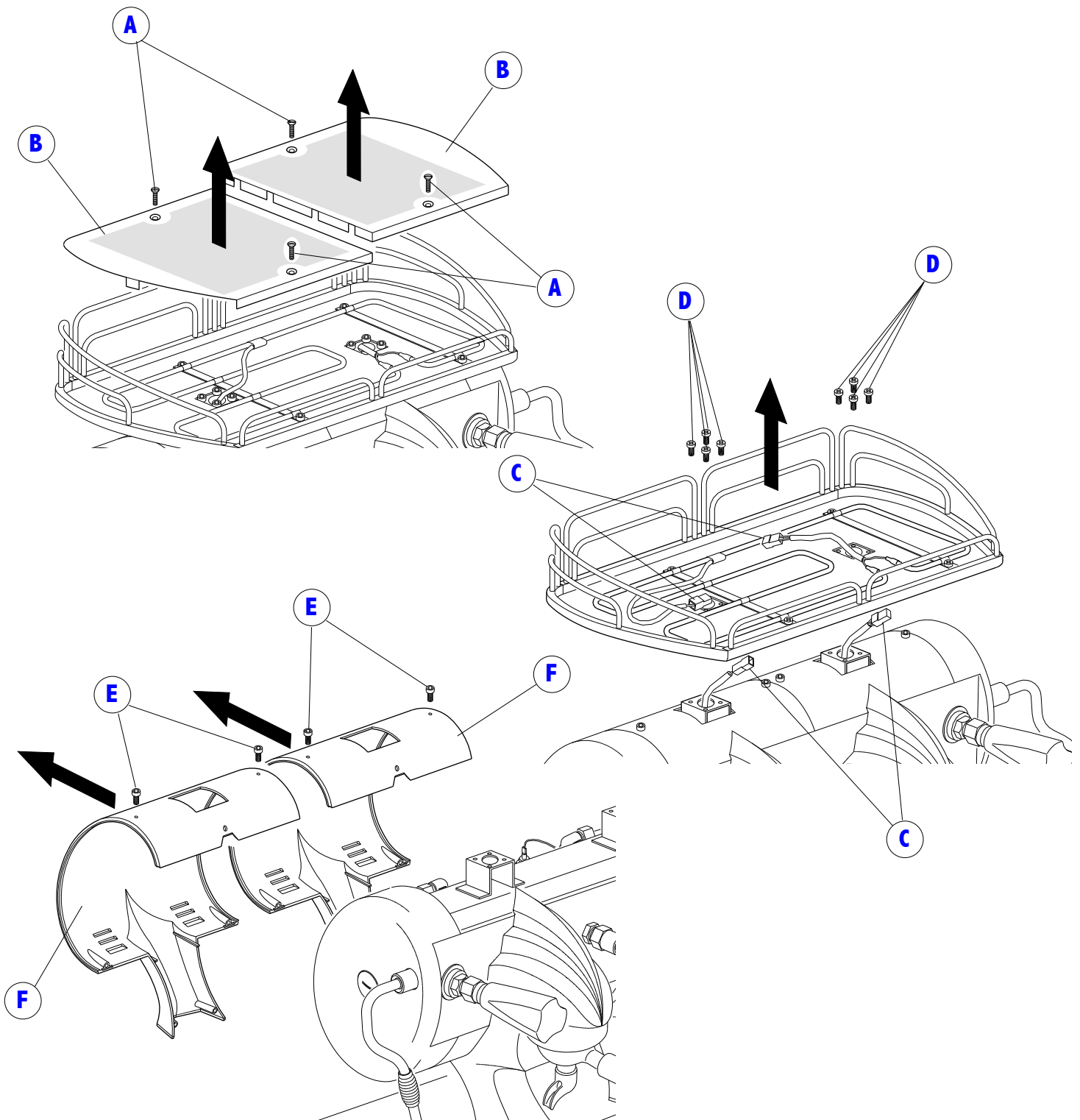


WARNING

Any work on the machine must be performed with the machine disconnected from the electrical and hydraulic mains and with the boiler cold.

1.6 WORKING on the UPPER PART OF THE BOILER (safety valve, expansion valve, etc.)

- 1) Loosen the fastening screws located on the cup holder grille (A)
- 2) Remove the cup holder grilles (B)
- 3) Disconnect the electrical connectors (C) for the heating element and temperature probe which are located in the cup heater compartment
- 4) Loosen and remove the fastening screws of the cup holder (D)
- 5) Loosen the fastening screws of the boiler rear body (E)
- 6) Remove the rear body panels of the boiler (F)
- 7) After work is complete, put the body components back in place by following the procedure in reverse order



C.M.A. S.p.A.

Via dei Colli, 66 - 31058 SUSEGANA (TV) - ITALY
Tel. +39.0438.6615 - Fax +39.0438.60657
www.maspa.com - cma@maspa.com

Cod. 02000303 - Rev. 03 - 05/2005