

Weekly cleaning

Schaerer Coffee Vito

 **schaerer**



Refer to the safety instructions and to the chapter „Cleaning“ inside the user manual!

CAUTION!
User at risk!



Never reach into the machine or under the beverage outlets during the automatic cleaning!

CAUTION!
Machine at risk!





Execute the weekly cleaning process in minimum once per week! The weekly process is complementary to the daily cleaning and does not replace it!

Mixing bowl (Powdersystem)

1



 This cleaning is only necessary for machines with the option "Powder-system".

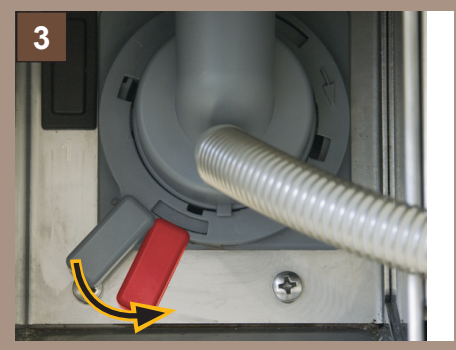
- ▶ Switch off the machine with the  button.
- ▶ Remove mains plug.

2



- ▶ Remove the left front cover (as shown in the picture).
- ▶ Remove the topping hose from the beverage outlet.

3



- ▶ Slide the lever (as shown in the picture) to unlock the mixer bowl.
 - Mixer bowl will be released.
- ▶ Clean the interior with a tissue.

4



- ▶ Disassemble the mixer bowl.
- ▶ Clean all parts under warm, running water.
- ▶ Allow all parts to dry completely.

5



- ▶ Re-assemble the mixer bowl parts.
- ▶ Replace the mixer bowl.
- ▶ Close the lever to lock the mixer bowl.
- ▶ Re-connect the mixer hose to the mixer bowl and the outlet.
- ▶ Re-place the left front cover.

Brewing unit

CAUTION!
Risk of squeezing!

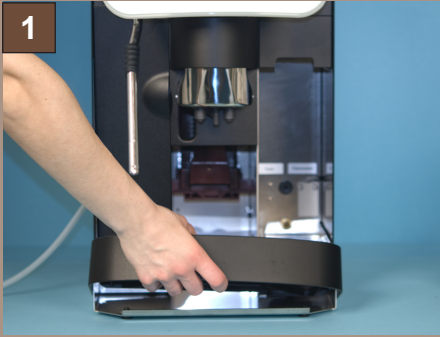



When operating movable parts, there is a risk of injury due to crushing!

CAUTION!
Machine at risk!



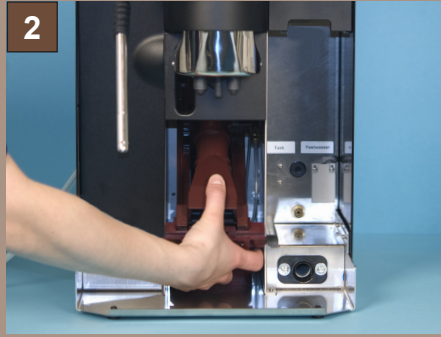
Never clean the brewing unit in a dishwasher and never use any cleaning additives.



- ▶ Switch off the machine with the  button.
- ▶ Remove mains plug.
- ▶ Push the beverage outlet to the highest position.
- ▶ Remove grounds container.
- ▶ Remove drip tray.

Option: With water tank

- ▶ Remove water tank.



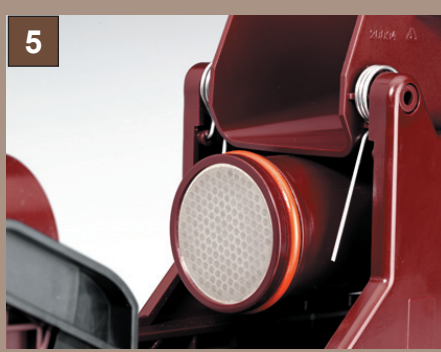
- ▶ Reach into the brewer area under the brewing unit with one hand and release the retaining catch.
 - Brewunit slips downwards!
- ▶ Slowly move the brewing unit downwards, tilt and pull forward.



- ▶ Use the multi tool to open the brewer completely by turning anti-clockwise until the end point is reached.
- ▶ Turn 90° back in clockwise direction.



- ▶ Push both springs outwards over the edges and unlock.
- ▶ Swing the slide upwards.
- ▶ Remove residues using a brush.
- ▶ Clean thoroughly under warm running water.



- ▶ Clean the brewer sieve under running water or by using a cloth.
- ▶ Allow to dry completely before replacing in the coffee machine.
- ▶ Remove coffee ground residues in the brewer area.
- ▶ Reinstall the dry brewing unit.

Water tank (option)



This cleaning is only necessary for machines with the option "Water tank".

- ▶ Clean thoroughly under warm running water.